

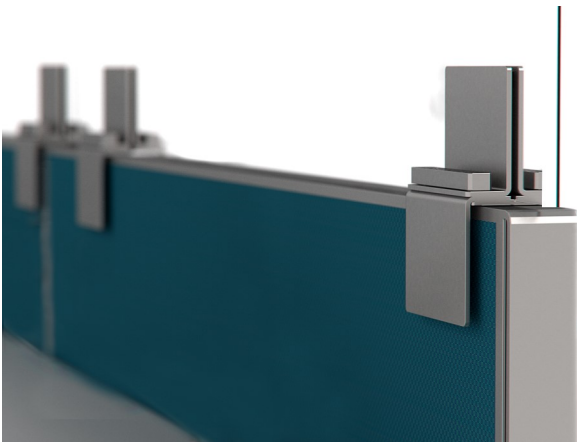


# Grand Stands

Ergonomic Workstation Solutions

## PANEL SHIELD SYSTEM

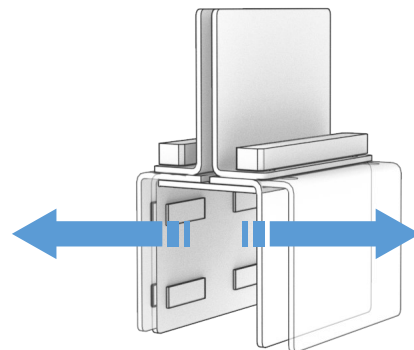
Tempered and Acrylic Glass

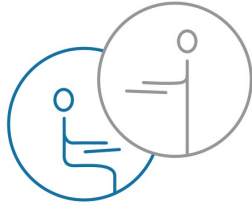


**Designed to get your team back to work with an attractive and simple solution to standard office panels**

Standard office panels are not tall enough to provide separation and protections for individual spaces. Grand Stands Panel Shields extend the height of panels with acrylic or tempered glass partitions. Our exclusive adjustable Panel Clamps accommodate multiple different manufacturers panel systems.

- Designed and manufactured in California
- Directly fits panels between 1 3/4" to 4" with custom options available
- Compatible with Acrylic or tempered glass regardless of current material thickness standards
- Standard colors silver, black and white and custom color options available
- Minimal visual presence
- Easy installation and removal
- **Divider material position is independent of clamping the cubicle panel, the divider remains visually centered over the panel**

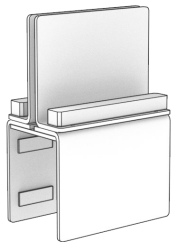




## PANEL SHIELD SYSTEM

### Tempered or Acrylic Glass

Panel Shields— Standard Sizes 3/16" Tempered Glass	Description	M	E	S	1/4" Acrylic Panel Shields	Description	List
		Middle Top edge polished	End Run Single Radius with tangent polished edges	Stand Alone Radius at both ends with side and top polished edges			
PS-TG-2424	24" length and 24" tall shield	\$196	\$250	\$274	PS-2424	24" length and 24" tall shield	\$134
PS-TG-3624	36" length and 24" tall shield	\$294	\$348	\$372	PS-3624	36" length and 24" tall shield	\$231
PS-TG-4824	48" length and 24" tall shield	\$334	\$388	\$412	PS-4824	48" length and 24" tall shield	\$231
PS-TG-6024	60" length and 24" tall shield	\$374	\$439	\$463	PS-6024	60" length and 24" tall shield	\$426
PS-TG-7224	72" length and 24" tall shield	\$414	\$479	\$503	PS-7224	72" length and 24" tall shield	\$426



Panel Clamp	Description	List Price Each
PS-MB1-S	Silver panel clamp expandable to 1.75-2.375"	\$125
PS-MB1-B	Black panel clamp expandable to 1.75-2.375"	
PS-MB1-W	White panel clamp expandable to 1.75-2.375"	
PS-MB2-S	Silver panel clamp expandable to 2.5-3.5"	\$125
PS-MB2-B	Black panel clamp expandable to 2.5-3.5"	
PS-MB2-W	White panel clamp expandable to 2.5-3.5"	
PS-MB3-S	Silver panel clamp expandable to 3.5-4"	\$125
PS-MB3-B	Black panel clamp expandable to 3.5-4"	
PS-MB3-W	White panel clamp expandable to 3.5-4"	