

ACE15

for Lab and other Specialized Applications



The ACE15 Arm, mounted above the user, has all of the travel in the downward direction. The user has the ability to put the monitor in the optimal position. The arm supports the weight load with “one way friction lock technology”.

The elevated armature mounting position keeps it from interfering with the work area and eliminates the risk of knocking into equipment (vials, pipettes, microscopes) or liquids.



Traditional Armatures are installed on or close to the worksurface which takes up valuable space and interferes with equipment and work tasks.





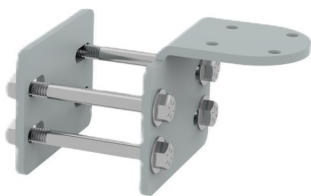
Lab and Work Bench Mounting

GSI offers universal brackets to install an ACE15 to various Uprights



TS-BKT—Channel Mount

This Bracket mounts with T-slot nuts. The nut is front loaded into the channel, turns 90 degrees as the bolt is tightened and locks in place.



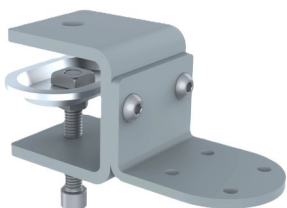
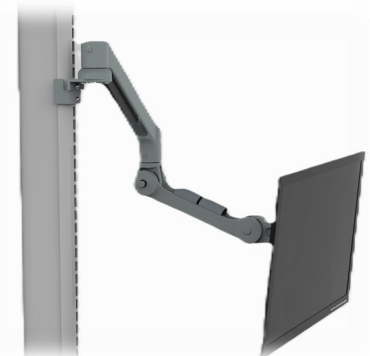
UB-BKT—Bolt and Plate Mount

The “UB” mounting brackets fit on square or rectangle uprights up to 2 3/4” wide. The depth of the upright (please specify) is accommodated by the length of the bolts.



KE-BKT—Radius Channel Mount

The “KE” L-Bracket is winged to mount to a radius upright. The slot nuts are made to fit into a slot 0.52” x 0.29”



SC-BKT—SHELF Mount

The “SC” L-Bracket can be clamped to shelves 1” - 1-1/2” thick.

