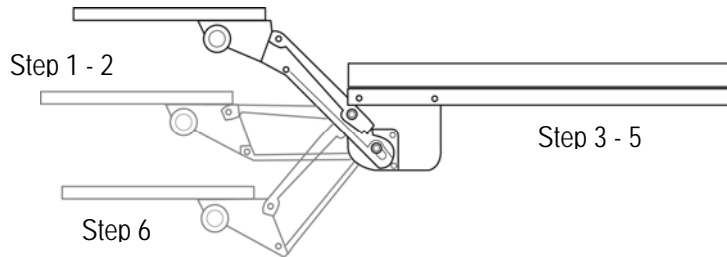


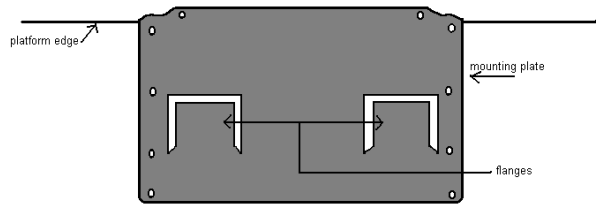


INSTALLATION INSTRUCTIONS **for 23500 Click!t Arm (with Split track) and Mounting Bracket**

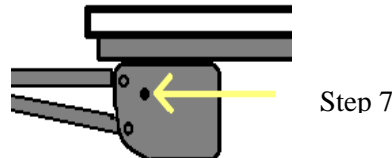


- 1) **Attach the 5"x 8" mounting plate** (provided with Click!t Arm) to the bottom rear edge of Keyboard Platform with
 - a) wood screws provided with all Grand Series Laminate Platforms OR
 - b) nuts and bolts provided with all Milan Series, ET2, ET3 and ET4 platforms

- 2) **Attach the Platform (with mounting plate) to Click!t Arm:** With the two flanges facing down and away from you slip the keyboard platform onto the front end of the mechanism. The two holes overlapping the plate will line up with the corresponding holes in the Click!t Arm. Use the two silver machine screws with washers and bolts to secure – set aside.



- 3) **Mounting the split track to the desk:** Line up the longer (17 5/8") track under the desk centered in the knee space (the back end has two holes closer to the edge of track) approximately 1/4" back from the front edge of desk. Use 6 larger wood screws to attach.
- 4) Slide the keyboard arm and platform into the track and push back to let the arm protrude 1" to 2" past the end of the long track. Slide 4" extension track onto the arm, counter sunk holes up against the rear end of the long track (the arm will help align the tracks at the connection). Attach with additional wood screws.
- 5) Install a plastic track guard onto each end of the track with 2 **flathead** screws each.
- 6) **Attaching the tilt control knob:** Remove the silver or red nut before attaching the rubber tilt control knob.
- 7) **Remove the shipping pin** – this is the rod without cap on it. (Store the shipping pin in the hole on the right side of the rear bracket. If the unit is ever removed from the track, the pin should be re-inserted before removal.)



The arm and tray can now be stored under the desk or adjusted to the desired height and tilt position.

For further questions, please call Grand Stands, Inc. at 1-800-831-2150